



# Earned Schedule Contribution to Project Management

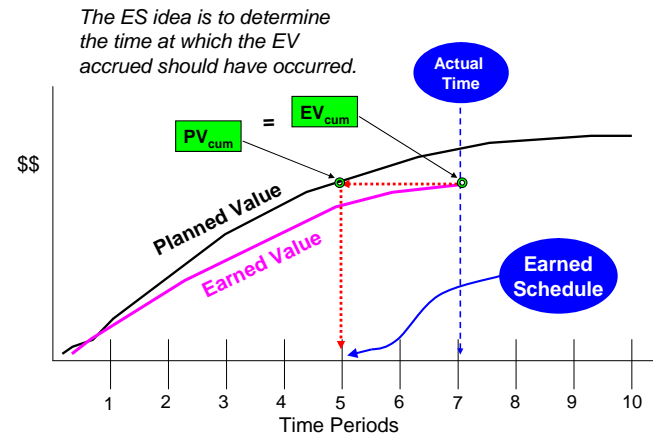
Walt Lipke

PMI® - Oklahoma City

+1 405 364 1594

waltlipke@cox.net

www.earnedschedule.com



A decorative graphic on the left side of the slide, featuring three colored circles (dark teal, light teal, and grey) and a vertical line.

# Abstract

*First introduced in 2003, Earned Schedule (ES) is a schedule analysis method extending the benefits of Earned Value Management. Presently, the ES method is used globally for all types and sizes of projects. It is being taught in universities, is now included in project management textbooks as well as the PMI® Practice Standard for Earned Value Management, and is a topic of graduate level research. This workshop discusses its beginnings and the evolution of the techniques and capabilities occurring over the last decade. ES is shown to be useful to project managers for analysis and control of schedule performance.*

A decorative graphic on the left side of the slide, featuring three colored circles (dark teal, light teal, and grey) and a vertical line.

# Objectives

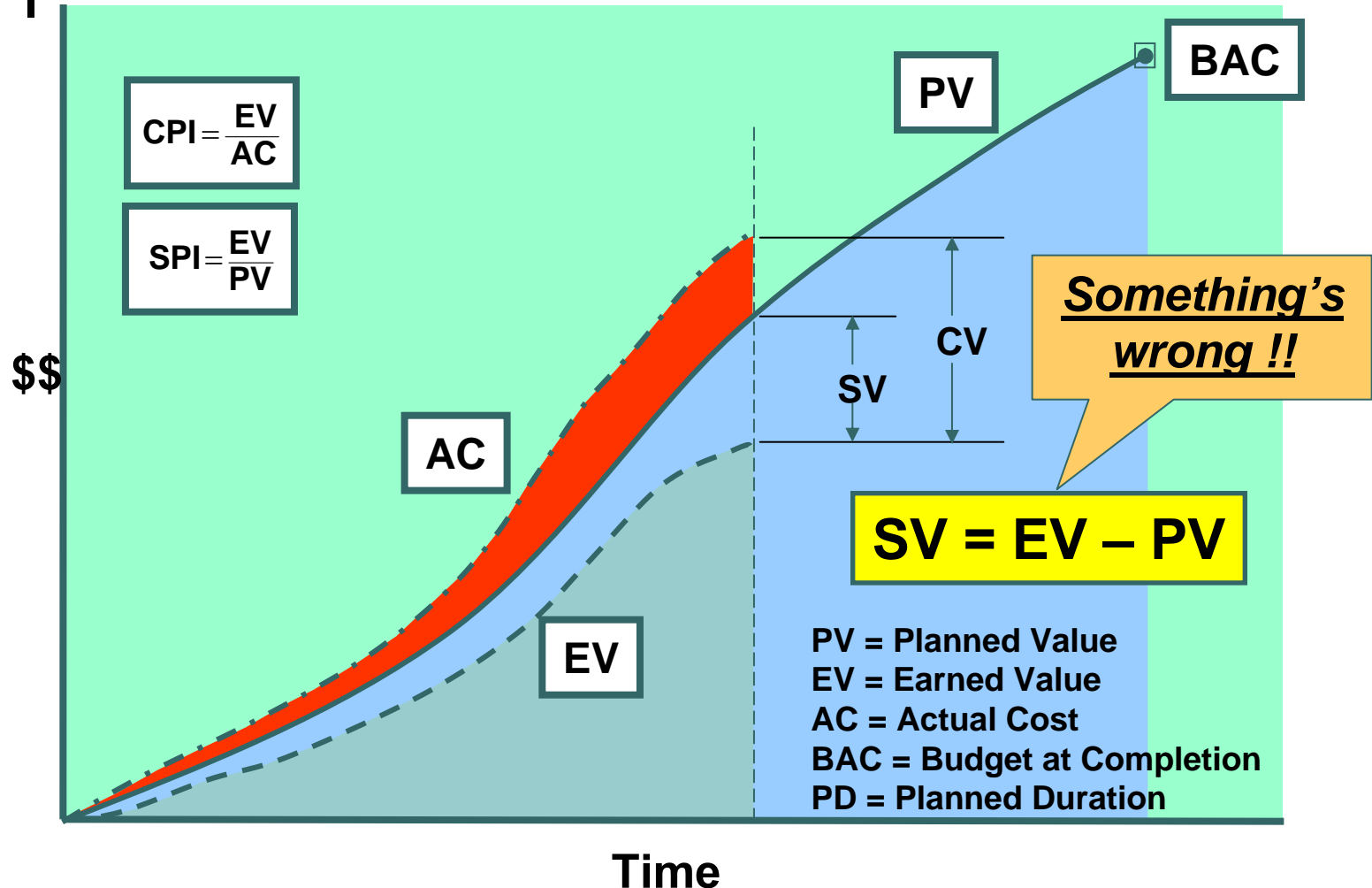
- What is Earned Schedule?
- How does it relate to EVM?
- What can I do with ES?
- Are ES results reliable?
- Are other methods better?
- Does it take a lot of extra work?
- Will ES help me manage?

A decorative graphic on the left side of the slide, featuring three colored circles (dark teal, light teal, and grey) and a vertical line.

# Overview

- EVM Introduction / Problem
- Earned Schedule Measure & Indicators
- Forecasting & Prediction
- Application to Critical Path
- Schedule Adherence
- Small Projects
- Longest Path
- Statistical Planning & Forecasting
- Summary
- Application Help

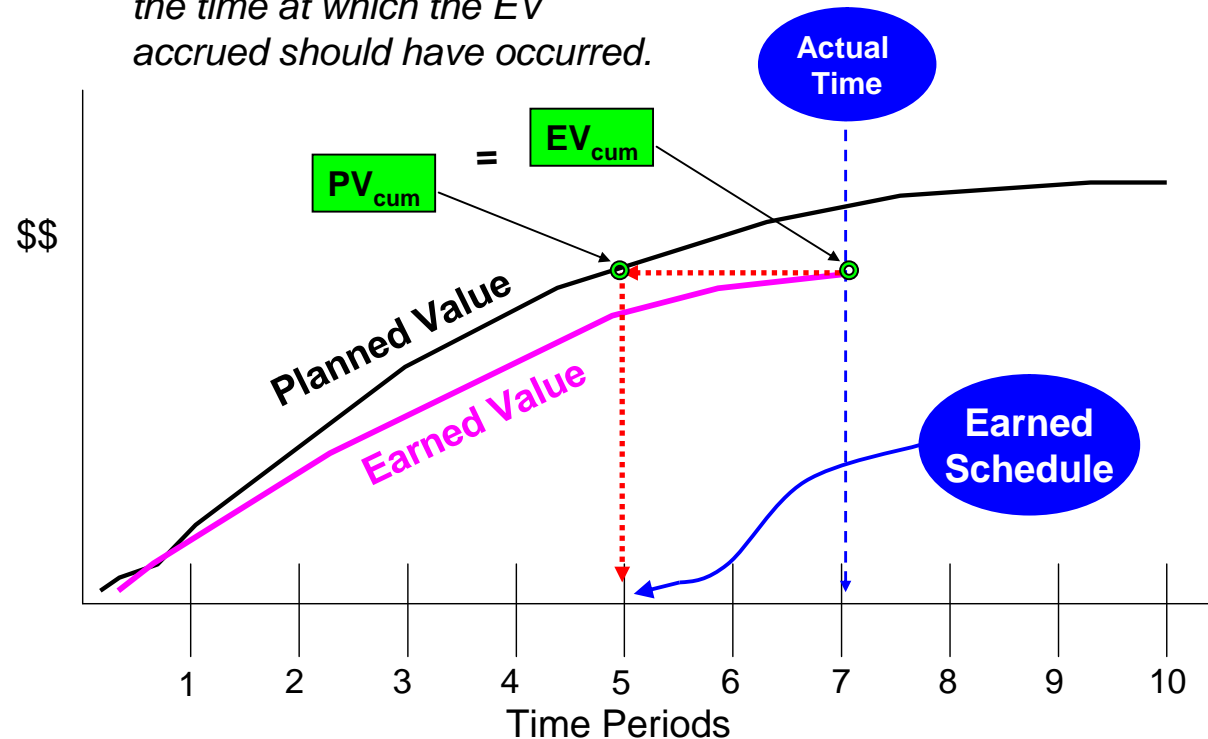
# EVM Introduction/Problem



# Earned Schedule Concept

## ES introduced in 2003

*The ES idea is to determine the time at which the EV accrued should have occurred.*



# ES Metric

- ES measure requires the PMB and EV accrued
- Determined from formula,  $ES = C + I$

where C is number of periodic time units of the PMB for which  $EV \geq PV_C$

and  $I = [(EV - PV_C) / (PV_{C+1} - PV_C)] * 1 \text{ period}$

- At completion, just as  $EV = BAC$ ,  $ES = PD$   
where PD = Planned Duration

# ES Indicators

- The ES measure leads to reliable indicators for the entire duration of the project

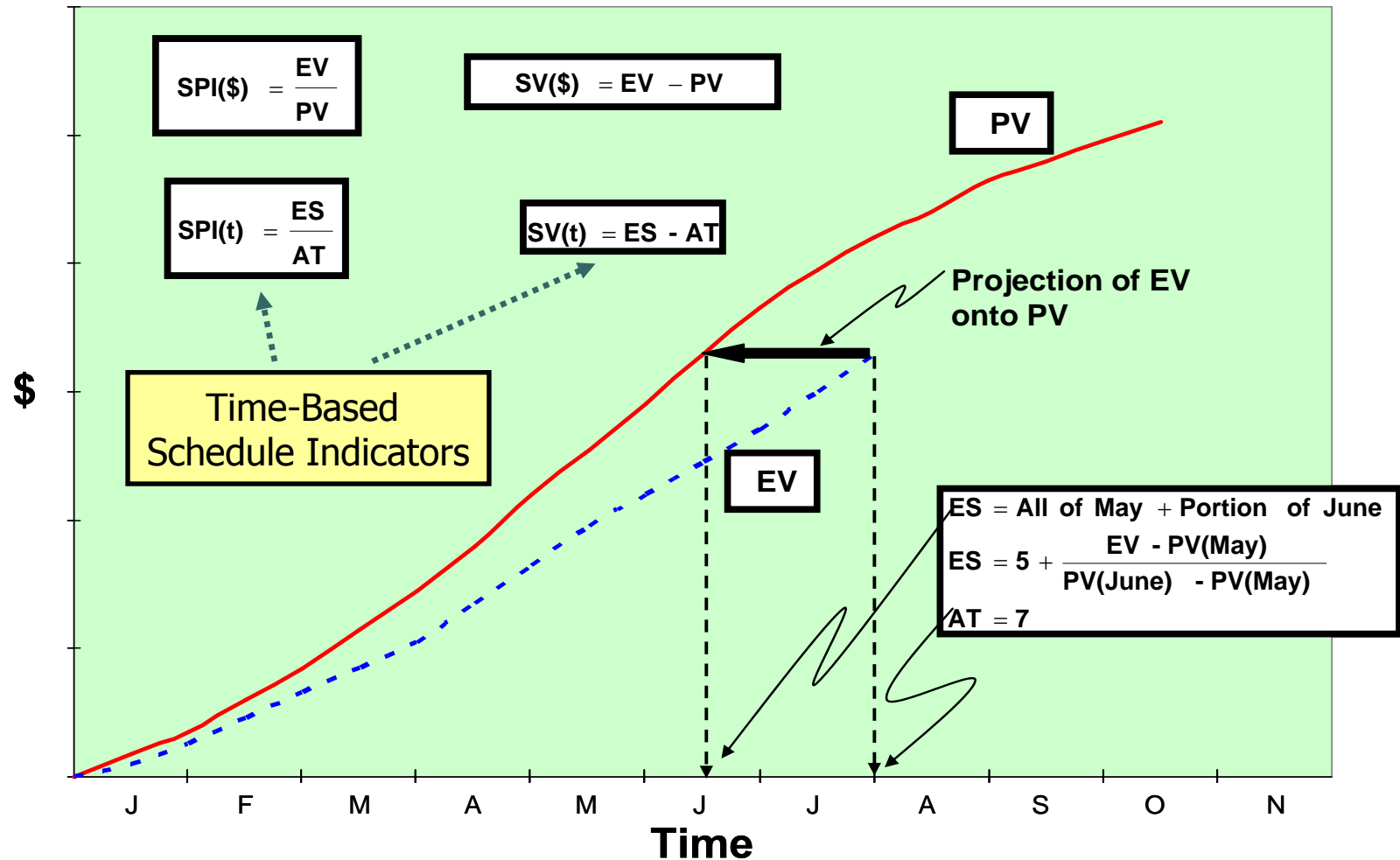
$$\left. \begin{array}{l} SV(t) = ES - AT \\ SPI(t) = ES / AT \end{array} \right\} \text{cumulative}$$

$$\left. \begin{array}{l} SV(t)_n = (ES_n - ES_{n-1}) - 1 \\ SPI(t)_n = (ES_n - ES_{n-1}) / 1 \end{array} \right\} \text{periodic}$$

where AT is the number of status periods



# ES Computation Example

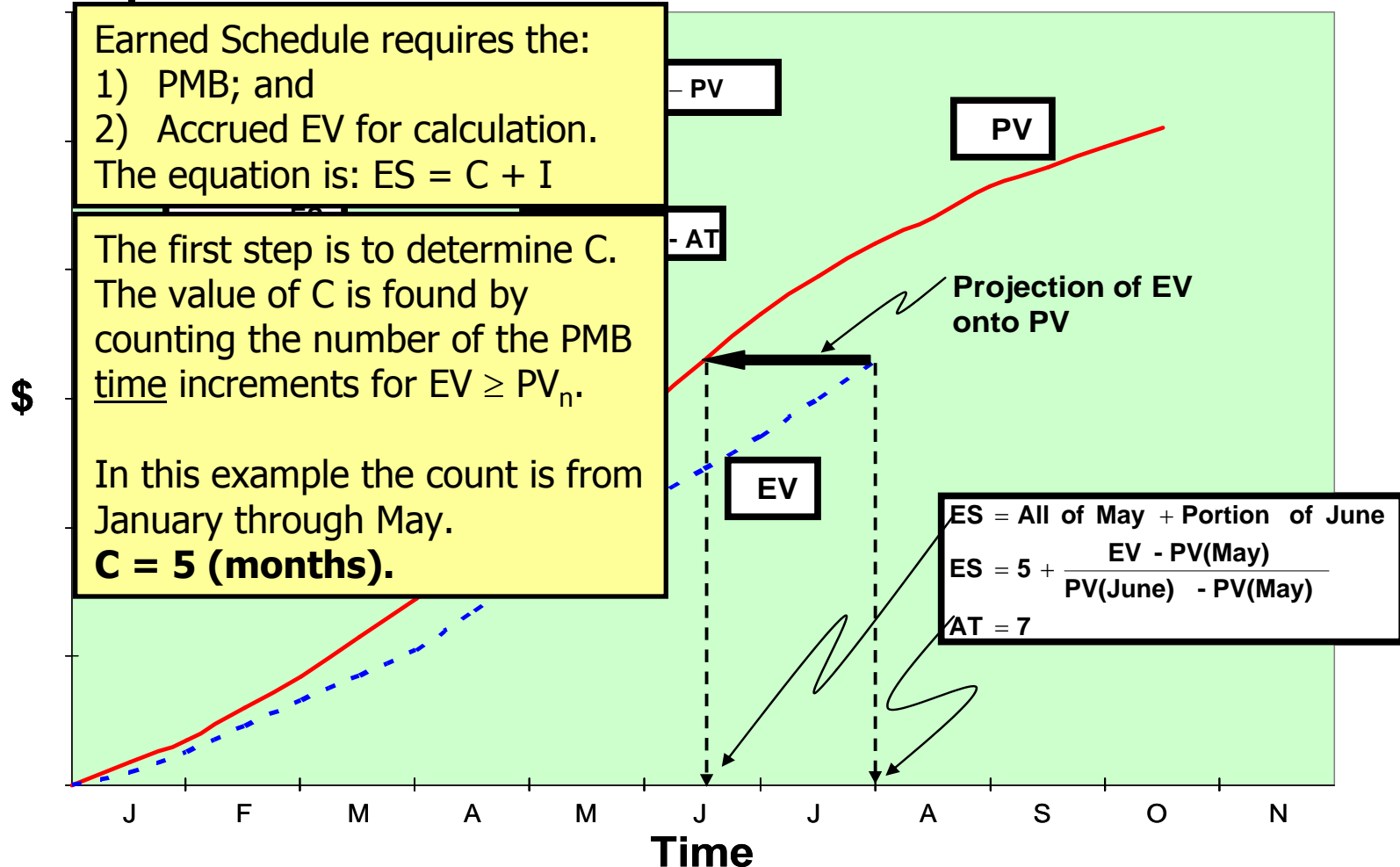


# ES Computation Example

Earned Schedule requires the:  
 1) PMB; and  
 2) Accrued EV for calculation.  
 The equation is:  $ES = C + I$

The first step is to determine C.  
 The value of C is found by counting the number of the PMB time increments for  $EV \geq PV_n$ .

In this example the count is from January through May.  
**C = 5 (months).**



# ES Computation Example

Thus far,  $ES = 5 + I$  (months).  
In the small box at the lower right,  
is the equation for calculating  $I$ .

For the example, let

- 1)  $EV = 100$
- 2)  $PV_5$  (May) = 90
- 3)  $PV_6$  (June) = 110.

Let's calculate  $I$ :

$$I = (100 - 90) / (110 - 90) = 0.5$$

$$ES = 5 + 0.5 = 5.5 \text{ (months)}$$

From  $ES$  (5.5 months) we can now  
calculate the  $ES$  indicators:  
 $SV(t)$  and  $SPI(t)$ .

The  $EV$  is reported at Actual Time  
 $AT = 7$ , the end of July.

$$SV(t) = 5.5 - 7 = -1.5 \text{ months}$$

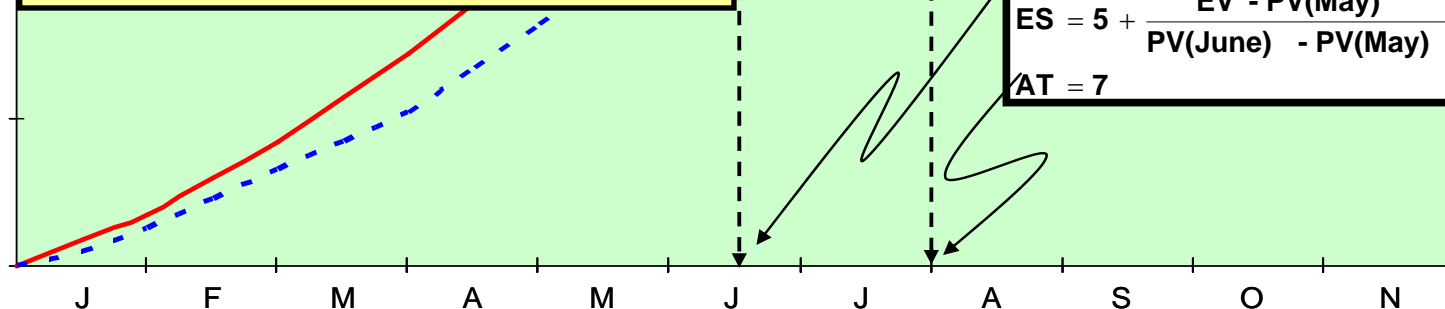
$$SPI(t) = 5.5 / 7 = 0.79$$

$$ES = \text{All of May} + \text{Portion of June}$$

$$ES = 5 + \frac{EV - PV(\text{May})}{PV(\text{June}) - PV(\text{May})}$$

$AT = 7$

\$



Time

# ES Prediction

- Can the project be completed as planned?

- $$\text{TSPI} = \text{Plan Remaining} / \text{Time Remaining}$$
$$= (\text{PD} - \text{ES}) / (\text{PD} - \text{AT})$$

where  $(\text{PD} - \text{ES}) = \text{PDWR}$

PDWR = Planned Duration for Work Remaining

- .....completed as estimated?

- $$\text{TSPI} = (\text{PD} - \text{ES}) / (\text{ED} - \text{AT})$$

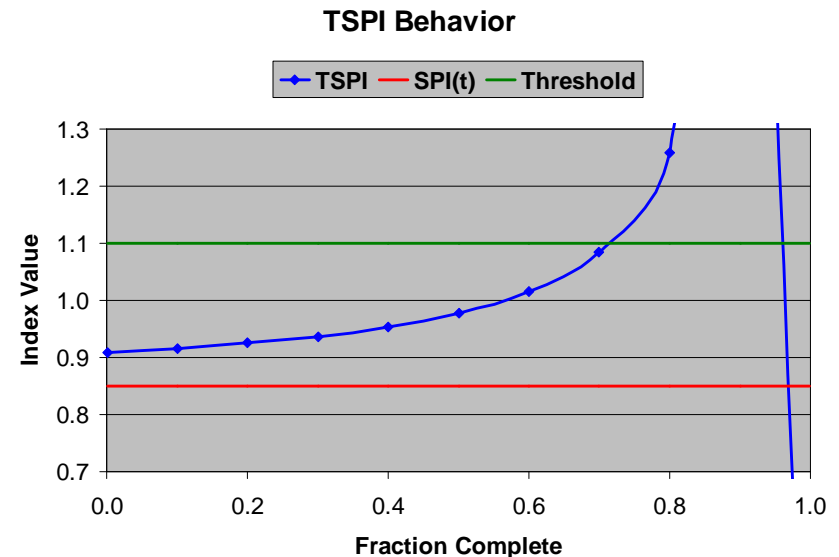
where ED = Estimated Duration

TSPI Value	Predicted Outcome
$\leq 1.00$	Achievable
$> 1.10$	Not Achievable

# ES Prediction

## Why does $\text{TSPI} > 1.10$ indicate the project cannot recover?

- At 1.10, for modest increases in EV, the rate of change of TSPI becomes increasingly larger
- Once the threshold is exceeded, there is little hope that management intervention can have positive impact ...the project is very rapidly becoming “out of control”



# ES Forecasting

- Long time goal of EVM ...Forecasting of total project duration from present schedule status
- Independent Estimate at Completion (time)
  - $IEAC(t) = PD / SPI(t)$
  - $IEAC(t) = AT + (PD - ES) / PF(t)$ 
    - where  $PF(t)$  is the Performance Factor (time)
  - Analogous to IEAC used to forecast final cost
- Independent Estimated Completion Date (IECD)
  - $IECD = \text{Start Date} + IEAC(t)$

# ES Terminology

<b>Metrics</b>	<b>Earned Schedule</b>	<b>ES<sub>cum</sub></b>	ES = C + I number of complete periods (C) plus an incomplete portion (I)
	<b>Actual Time</b>	<b>AT<sub>cum</sub></b>	AT = number of periods executed
<b>Indicators</b>	<b>Schedule Variance</b>	<b>SV(t)</b>	SV(t) = ES – AT
		<b>SV(t)%</b>	SV(t)% = (ES – AT) / ES
	<b>Schedule Performance Index</b>	<b>SPI(t)</b>	SPI(t) = ES / AT
	<b>To Complete Schedule Performance Index</b>	<b>TSPI</b>	TSPI = (PD – ES) / (PD – AT)
			TSPI = (PD – ES) / (ED – AT)
<b>Predictors</b>	<b>Independent Estimate at Completion (time)</b>	<b>IEAC(t)</b>	IEAC(t) = PD / SPI(t)
			IEAC(t) = AT + (PD – ES) / PF(t)
	<b>Variance at Completion</b>	<b>VAC(t)</b>	VAC(t) = PD - IEAC(t) or ED

# Critical Path



# Critical Path Application

- Critical Path – the sequence of planned tasks having the longest duration
- Traditionally, management focuses on performance of the CP ...believing by so doing project duration is minimized
- Schedulers forecast completion by adding the remaining planned task durations of the CP to the actual duration
  - The forecast doesn't take into account the schedule performance efficiency of the accomplished work

# Critical Path Application

- Are there ways ES can be used to analyze CP performance?
- EVM provides no measure of CP performance ...EV accrual can come from any task
- First method – compare IEAC(t) to the CP forecast
  - BAH has used this method – execution problems were identified earlier from the ES forecast
  - Henderson achieved similar results
  - Although method is not applied directly to CP ...it does infer that typical CP forecasting is unreliable

# Critical Path Application

- Second method – use the CP tasks as if they comprise the project
  - Create PMB from CP tasks only
  - Use EV from these tasks to compute ES
  - Compare  $SPI(t)_{CP}$  to  $SPI(t)$  for total project
  - Method provides management additional information regarding critical and non-critical performance ...and brings more focus to network schedule execution

# Critical Path Application

- Second method – Compare  $SPI(t)_{CP}$  to  $SPI(t)$  for total project
  - When  $SPI(t)_{CP} \cong SPI(t)$  – balanced execution, minimizes project duration
  - When  $SPI(t)_{CP} \neq SPI(t)$  – problems can be expected, duration forecast will likely worsen

# Critical Path Application

- Both methods are considerably less effort than bottom up analysis
  - The significant analysis effort advantage offered by IEAC(t) & SPI(t) CP methods does not mean to imply that detailed schedule analysis should never be performed ...a bottom-up remaining schedule estimation should be performed, in addition, for critical decisions
- Traditionally, EVM has been restricted to cost performance analysis ...ES provides the link to extend EVM to CP performance analysis

# Schedule Adherence

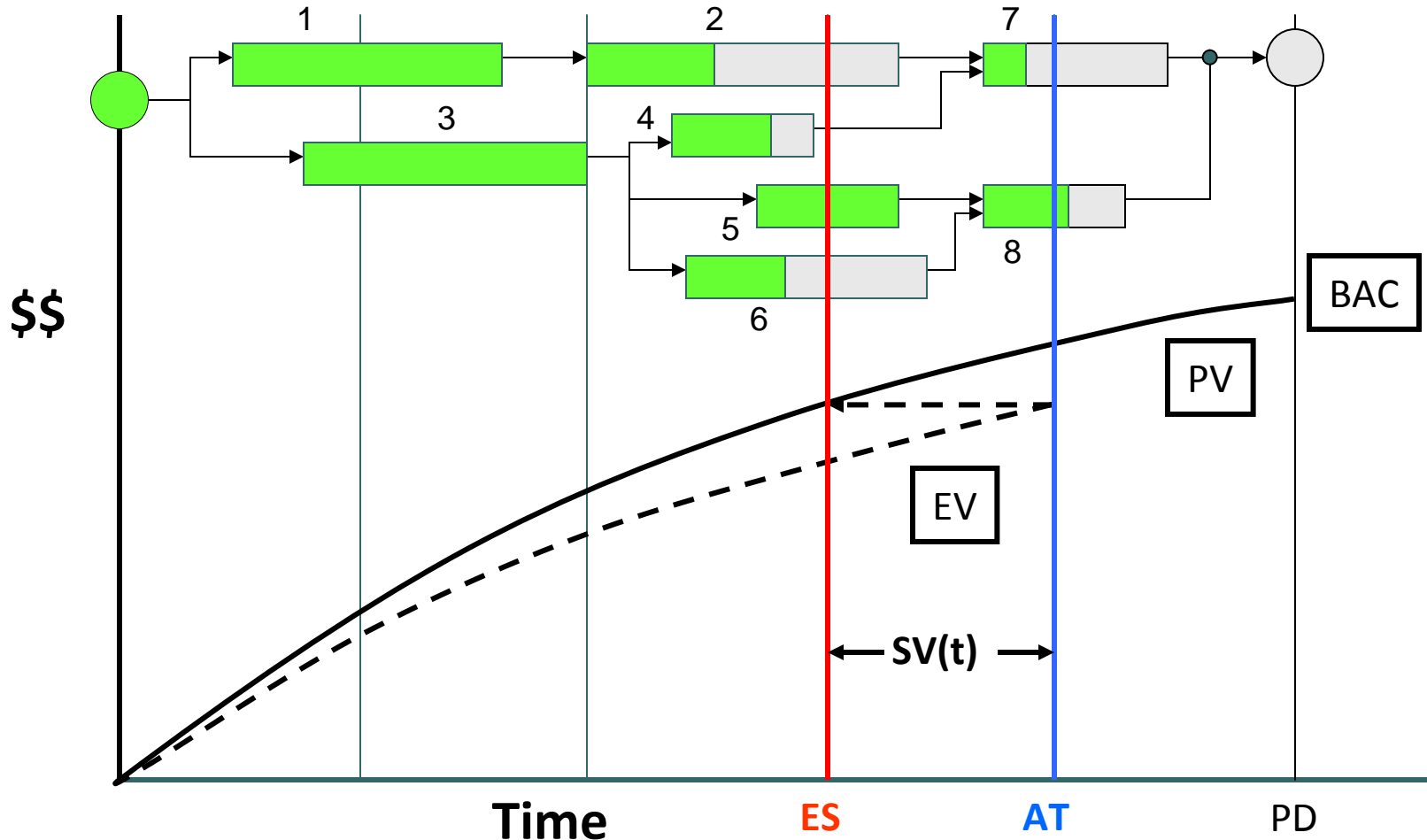
# Schedule Adherence

- Recall the initiatives to improve project performance and quality over the last 25 years: SPC, TQM, SEI CMM®, and ISO 9001
- What was their message?

*Undisciplined project execution leads to inefficient performance and defective products.*

- Then ...doesn't it make sense to measure how well the plan (process) is being followed?

# Measuring Schedule Adherence





# Measuring Schedule Adherence

- By measuring the portion of the EV accrued that is congruent with the planned schedule we can have an indicator for controlling the process
- Schedule Adherence is defined as:

$$P = \Sigma EV_j / \Sigma PV_j$$

where the subscript  $j$  denotes the identity of the tasks comprising the planned accomplishment

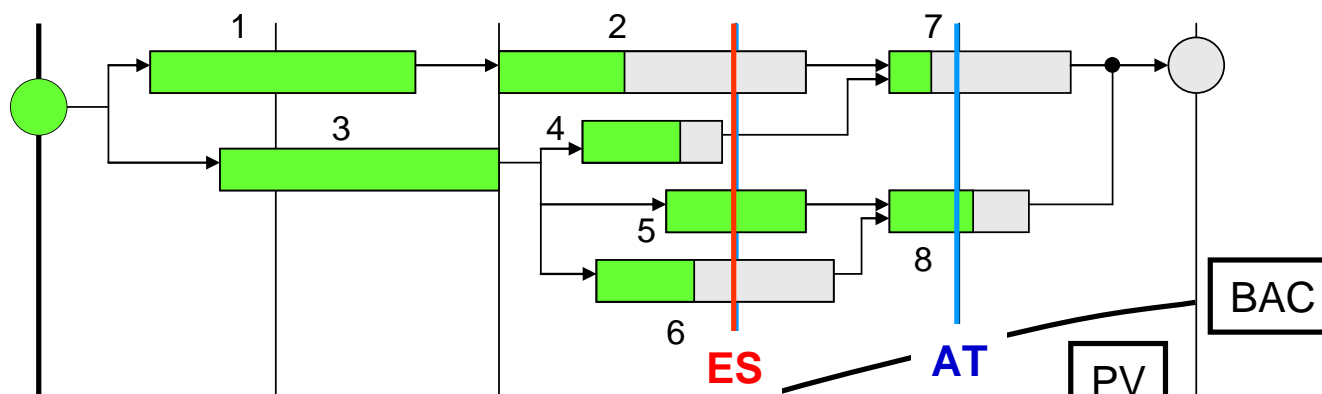
- The value of  $\Sigma PV_j$  is equal to the EV accrued at AT
- $\Sigma EV_j$  is the amount of EV for the  $j$  tasks, limited by the value of the corresponding  $PV_j$

# Measuring Schedule Adherence

- Tasks behind – indicates the possibility of impediments or constraints
- Tasks ahead – indicates the likelihood of future rework
- Both, lagging & ahead cause poor performance efficiency ...ahead performance is most likely caused by the lagging tasks

*Concentrating management efforts on alleviating impediments & constraints will have the greatest positive impact on project performance*

# SA - Analysis Example



Task	PV	PV@ES	EV@AT	EV - PV	I/C or R
1	10	10	10	0	
2	12	9	5	-4	I/C
3	10	10	10	0	
4	5	5	3	-2	I/C
5	5	2	5	+3	R
6	8	4	3	-1	I/C
7	7	0	1	+1	R
8	5	0	3	+3	R
Total	62	40	40	0	

# Example Application

- What is the value of the P-Factor for this example?

Task	PV	PV@ES	EV@AT	EV - PV	I/C or R
1	10	10	10	0	
2	12	9	5	-4	I/C
3	10	10	10	0	
4	5	5	3	-2	I/C
5	5	2	5	+3	R
6	8	4	3	-1	I/C
7	7	0	1	+1	R
8	5	0	3	+3	R
Total	62	40	40	0	

- It is seen that  $PV@ES = EV@AT$  ...  $PV@ES$  identifies the tasks which should be in-work/complete: 1 through 6

# Example Application

Task	PV	PV@ES	EV@AT	EV - PV	I/C or R
1	10	10	10	0	
2	12	9	5	-4	I/C
3	10	10	10	0	
4	5	5	3	-2	I/C
5	5	2	5	+3	R
6	8	4	3	-1	I/C
7	7	0	1	+1	R
8	5	0	3	+3	R
<b>Total</b>	62	40	40	0	

- Sum of EV@AT for 1 thru 6 is equal to 36 ...but the amount of EV for task 5 is +3 with respect to its corresponding task PV ...and thus,  $\sum EV_j = 36 - 3 = 33$
- The P-Factor can now be calculated:

$$P = \sum EV_j / \sum PV_j = 33 / 40 = 0.825$$

# Example Application

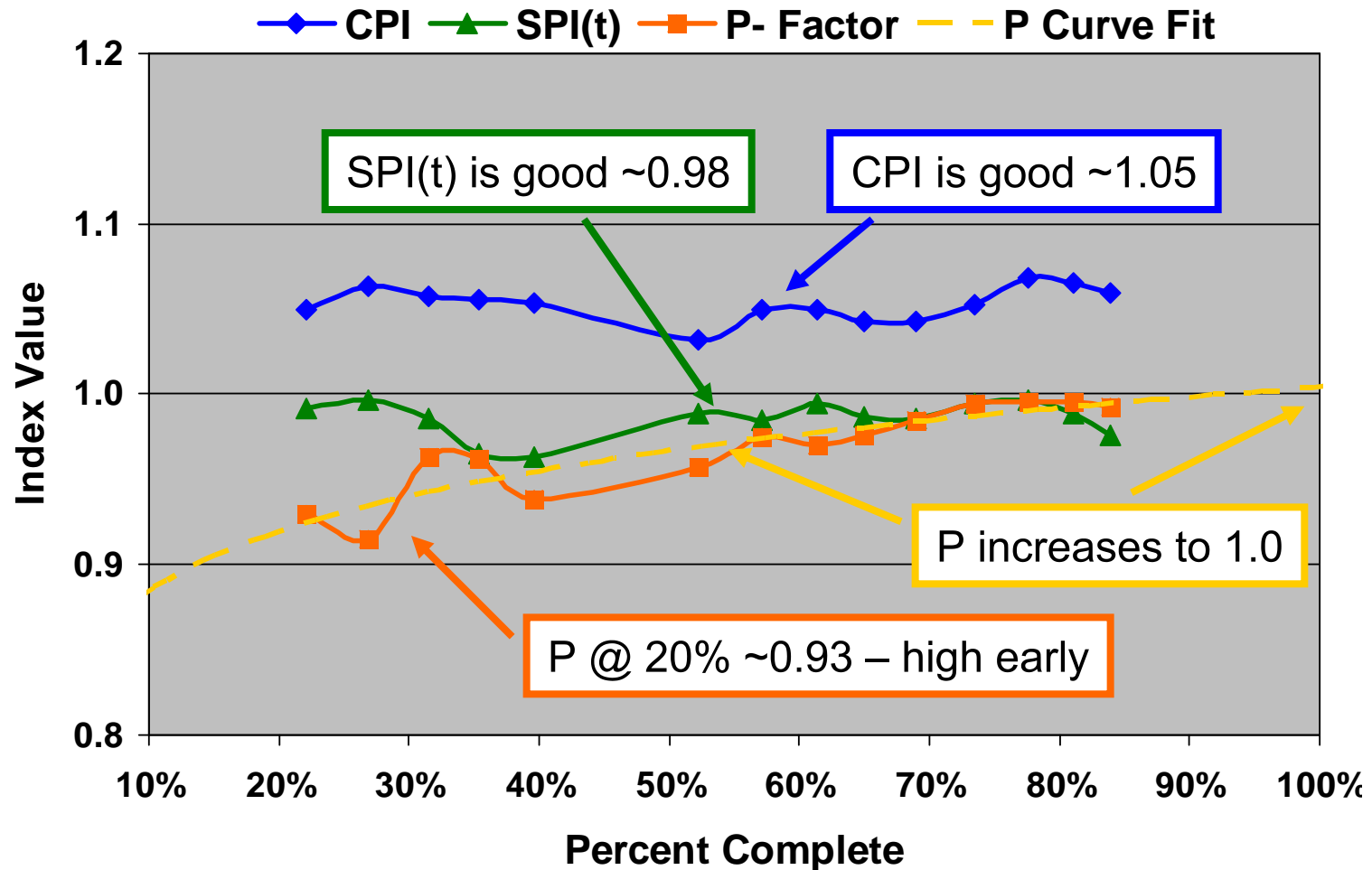
- From the value of P ...~80 percent of the execution is in conformance with the schedule
- Presuming all of the claimed accomplishment not in agreement with the schedule requires rework, i.e. 7 units ....then:
  - ~18 percent of claimed EV requires rework
  - Without a large amount of MR, successful completion is unlikely
  - The PM has much to do to save this project ...however, without the P-Factor indicator and the analysis ES facilitates, it is unclear as to what he/she should investigate and take action to correct

# SA - Real Data

- The next chart is a graph of CPI, SPI(t) and the P-Factor versus Percent Complete using actual project data
- Observe the following:
  - Values of P from 20% through 40% complete
  - Values of CPI & SPI(t) throughout
  - Overall behavior of the P-Factor

*What can be said about this project?*

# SA - Real Data





# SA - Real Data

- The outcome forecast indicates the project will complete under budget and slightly past the planned date ...a successful project
- A logical conjecture is ...when the planned schedule is closely followed output performance is maximized ...the project has the greatest opportunity for success
- Also ...when the indicators are all good, especially early in the project, we can deduce the project planning was excellent, as well as management and employee performance

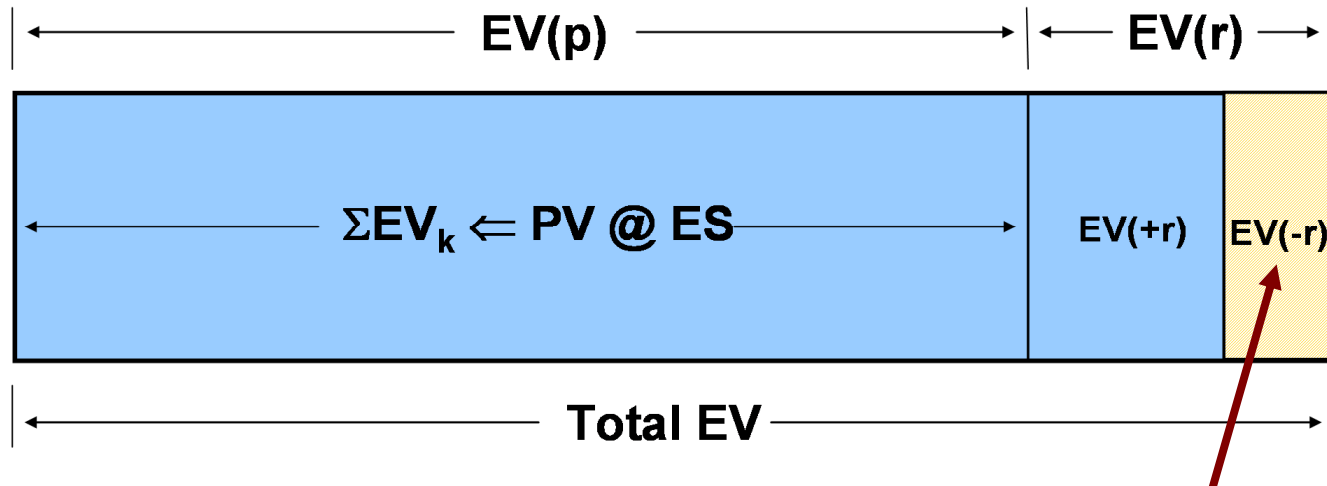
A decorative graphic on the left side of the slide, featuring three colored circles (dark teal, light teal, and grey) and a vertical line.

# SA Summary

- Independent from schedule efficiency ( $SPI(t)$ )
- Measured as ratio of EV conforming to the PV which should have been earned (P-Factor)
- Allows analysis which identifies tasks having impediments or constraints
- Identifies tasks which are likely to have future rework and enhances forecasting
- Leads to Schedule Adherence Index and improved control
- Facilitates calculation of induced rework

# Rework

# Rework Computation



$$R = EV(-r) = f(r) \cdot (1 - P) \cdot EV$$

# Rework & P-Factor

- The value computed for R represents the cost of rework forecast for the remainder of the project due to the present value of P
- Although of some interest, P is not particularly useful for PMs
- Regardless of effort invested to improve, P increases as project progresses and concludes at 1.0 at completion
- Thus, R does not yield trend information, nor can it lead to a forecast of total cost of rework

# Rework SA Index

- R can be transformed to a useful indicator by dividing by the work remaining (BAC – EV):

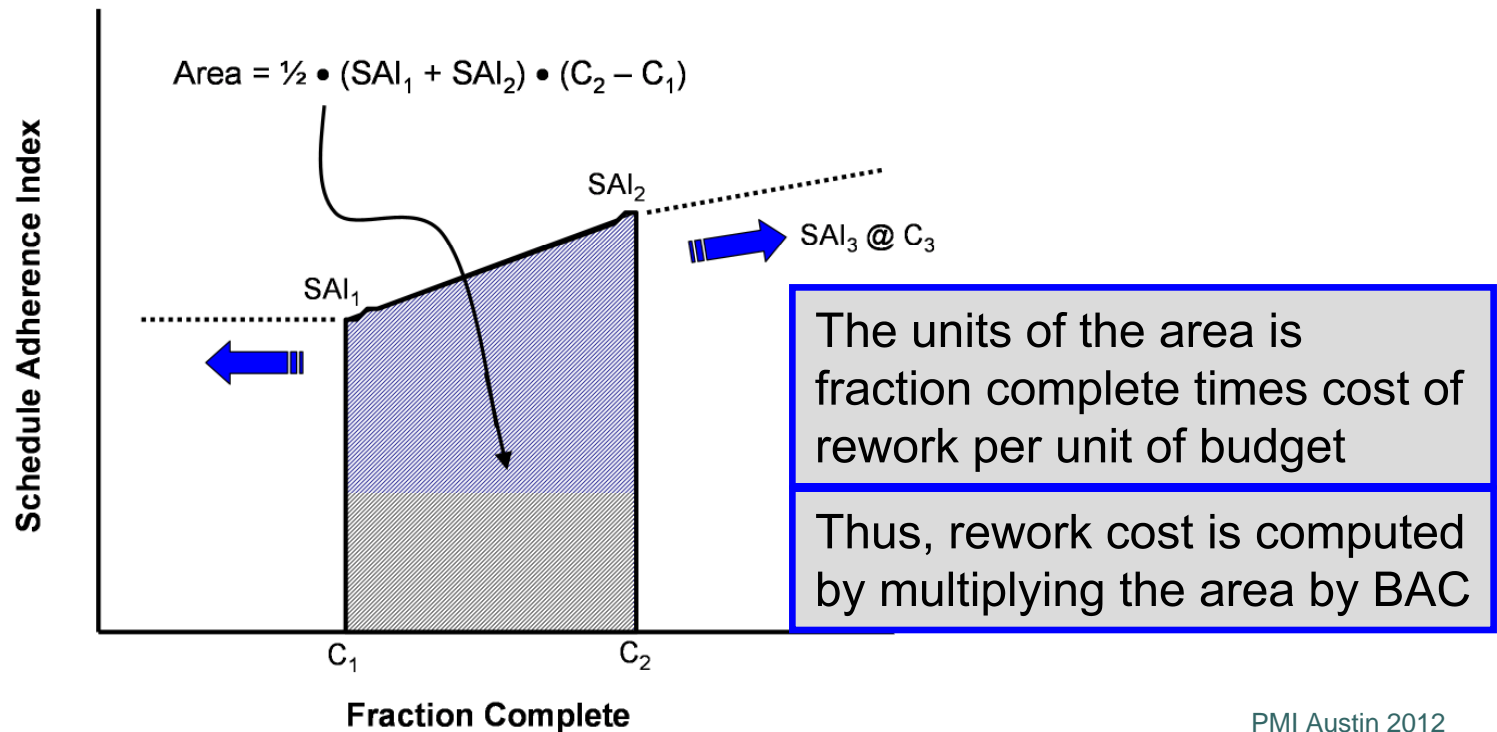
$$SAI = R / (BAC - EV)$$

where SAI = Schedule Adherence Index

- SAI is useful for detecting trends ...thus a management tool for gauging actions taken
  - SAI increasing with EV  $\Rightarrow$  SA worsening
  - SAI decreasing with EV  $\Rightarrow$  SA improving

# Computation Method

- Having SAI facilitates the calculation of rework within a performance period



# Rework Forecast

- To obtain the rework cost for period n:

$$R_p(n) = BAC \bullet [\frac{1}{2} \bullet (SAI_n + SAI_{n-1}) \bullet (C_n - C_{n-1})]$$

For n = 0 and N: SAI = 0.0

- The cumulative accrual is the sum of the periodic values:

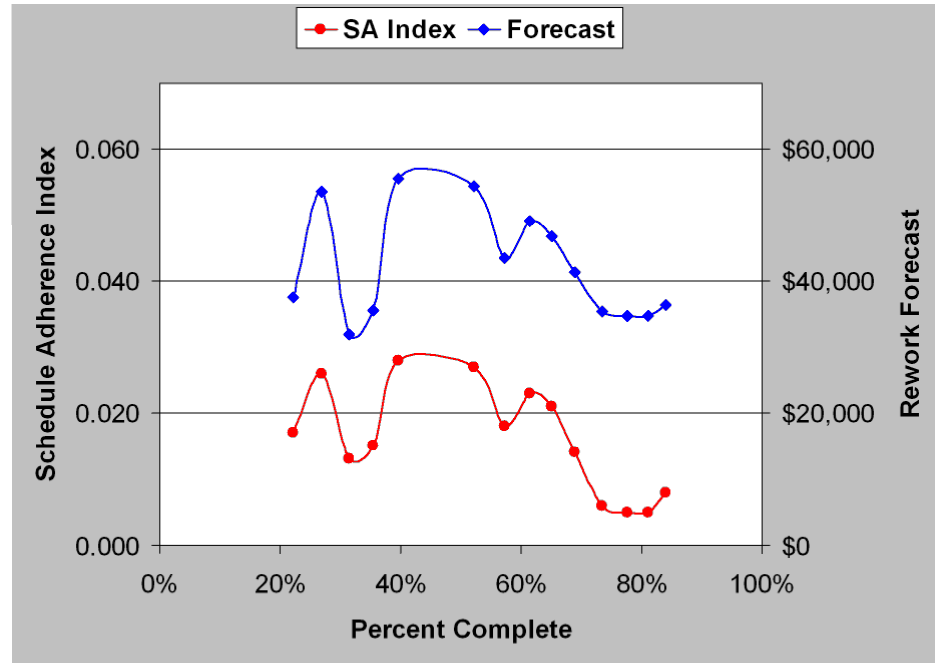
$$R_{cum} = \sum R_p(n)$$

- The formula for total rework forecast is:

$$R_{tot} = R_{cum} + SAI \bullet (BAC - EV)$$



# Rework - Real Example



- $BAC \cong \$2.5 \text{ million}$ ,  $P = 0.930 \Rightarrow 0.995$
- $CPI \cong 1.05$ ,  $SPI(t) \cong 0.98$
- $EV(r) \cong \$80K$ , Rework Forecast  $< \$40K$

A decorative graphic on the left side of the slide, featuring three colored circles (dark teal, light teal, and grey) and a vertical line.

# Rework Wrap Up

- Ability to determine amount of out of sequence EV and forecast rework cost heightens management attention to schedule execution
- Increases ability of oversight functions to identify EV “gaming”
- Improved schedule adherence hypothesized to improve both cost and schedule performance efficiencies

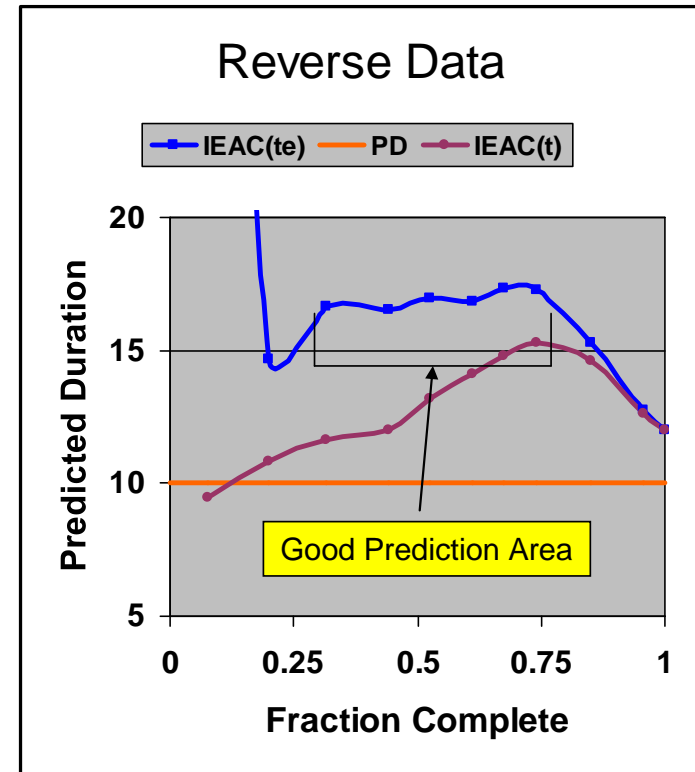
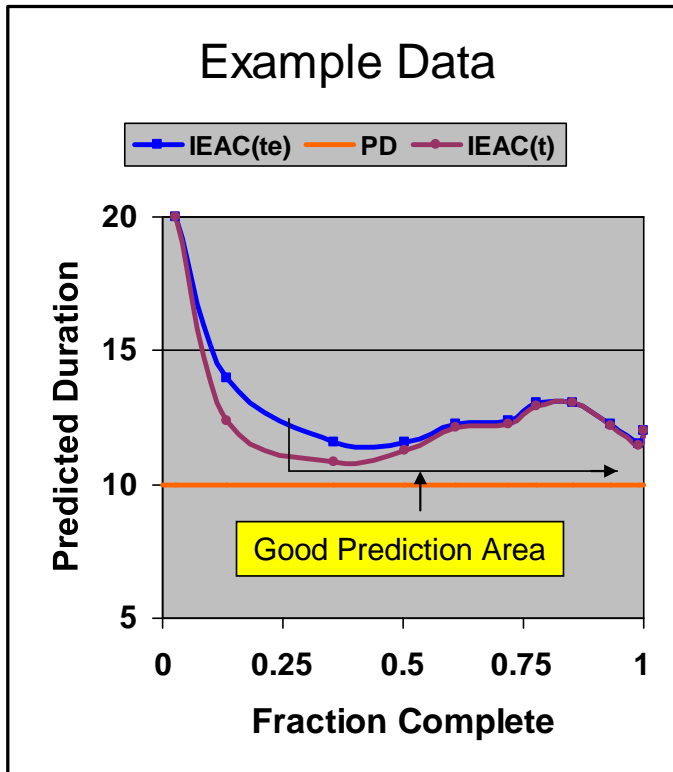
# Effective Earned Value

# Effective Earned Value

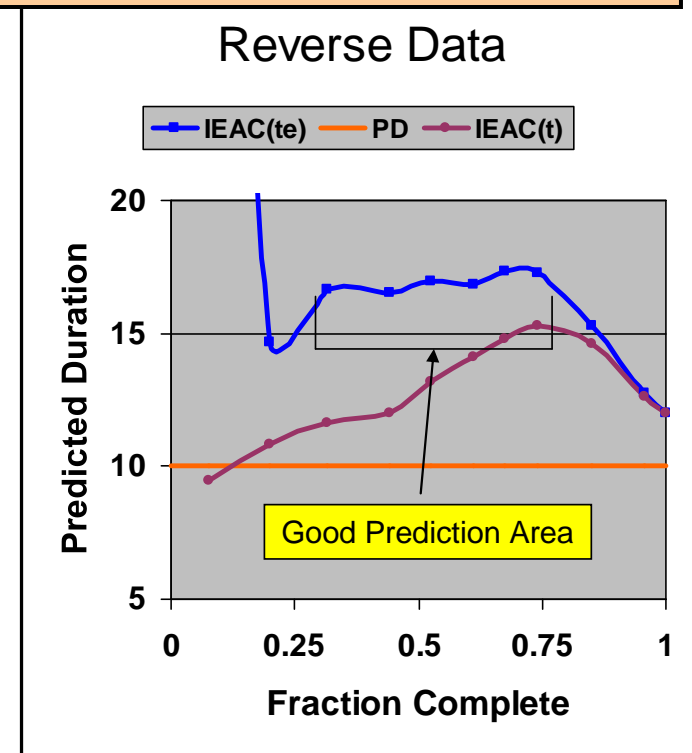
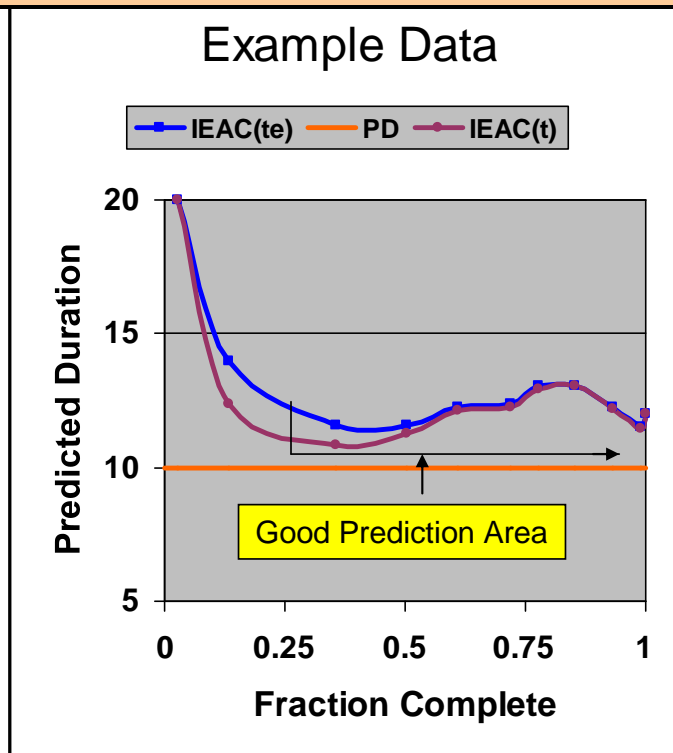
- $EV(e) = EV - R$
- Effective ES is computed using  $EV(e)$  ...i.e.,  $ES(e)$
- Effective EV and ES indicators/predictors/forecast ..

	Cost	Schedule
Indicators	$CV(e) = EV(e) - AC$	$SV(te) = ES(e) - AT$
	$CPI(e) = EV(e) / AC$	$SPI(te) = ES(e) / AT$
Predictors	$TCPI = [BAC - EV(e)] / [BAC - AC]$	$TSPI = [PD - ES(e)] / [PD - AT]$
	$TCPI = [BAC - EV(e)] / [EAC - AC]$	$TSPI = [PD - ES(e)] / [ED - AT]$
Forecast	$IEAC(e) = BAC / CPI(e)$	$IEAC(te) = PD / SPI(te)$

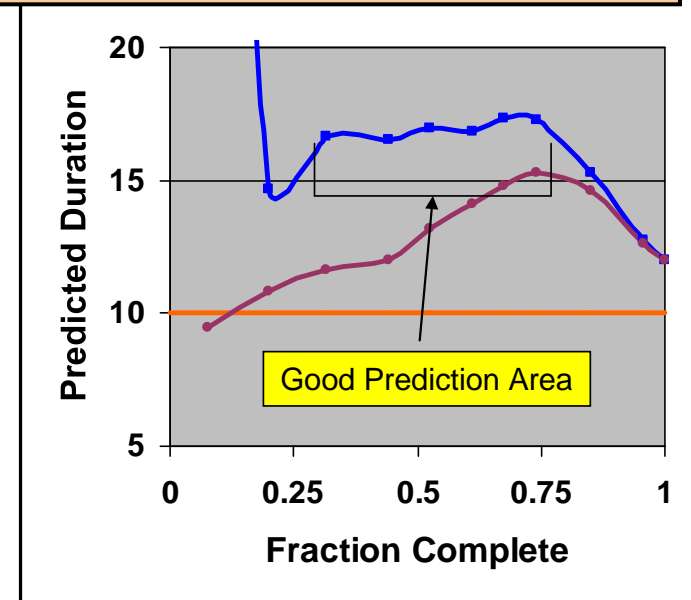
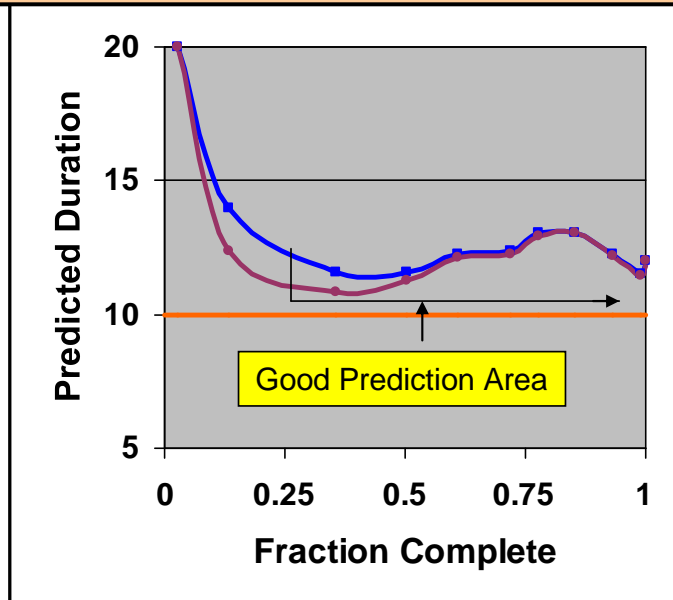
# Effective EV Forecasting



These graphs were created with notional data. The graph on the left shows the behavior of IEAC(t) and IEAC(te) when schedule adherence is good. As can be seen beginning at 0.25 until ~0.60 complete, IEAC(te) provides a better forecast. Thereafter the two forecasts are nearly identical.



The graph on the right shows the effect when schedule adherence during project execution is very poor. For the data set, completion was confined to be identical to the example in the left graph. Thus, the forecasting from 0.75 to completion is not representative in comparing  $IEAC(t)$  and  $IEAC(te)$ . In the portion labeled “Good Forecasting Area,”  $IEAC(t)$  is observed to continually worsen. However, the  $IEAC(te)$  forecast over the range shows very consistent forecast values ...displaying the value of  $EV(e)$ .



# Summary: Effective EV

- Lack of adherence to the schedule causes EV to misrepresent project progress
- Effective EV calculable from P,  $f(r)$ , and EV accrued
- Approximation method available ...when appropriate
- EV(e) analysis most useful during early portion of project execution and when performance suffers from poor process discipline



# Small Projects

A decorative graphic on the left side of the slide, featuring three colored circles (dark teal, light teal, and grey) and a vertical line.

# Small Projects

- Over several years of research and application, ES has shown to be a reliable schedule analysis extension to EVM
- For large projects, *Stop Work* and *Down Time* conditions for small portions of the project may not have much impact on the ES indicators and forecast values
- For small projects, the interrupting conditions will distort ES indicators and forecasts and possibly impact management decisions

# Down Time & Stop Work

- Down Time – *periods within the schedule where no work is planned*
  - Down Time extends the planned period of performance
  - Management has the prerogative to work, instead
- Stop Work – *periods during execution where management has halted performance*
  - When management imposes a Stop Work the opportunity has been removed for accruing EV

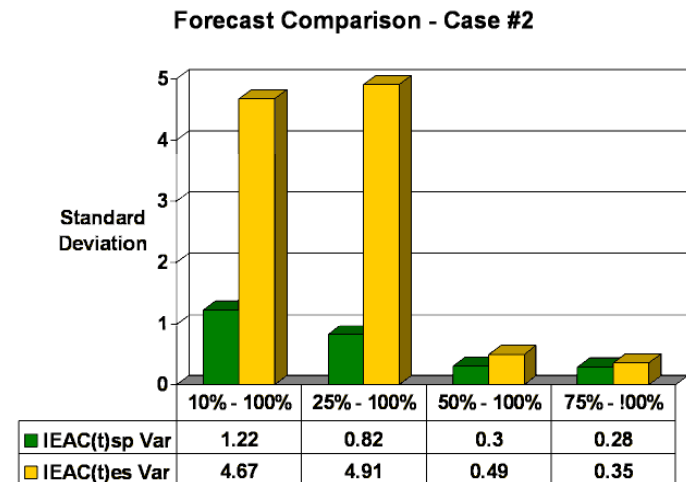
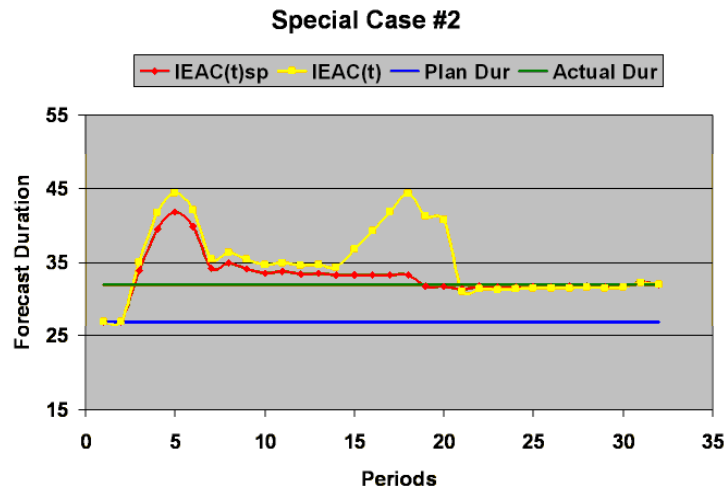
# Special Case Forecasts

- Before proceeding it is worthy to note that ES forecasts using the normal index values will always converge to the actual duration
- Well then ...if this is the case ...[Why bother?](#)

*The improvement is significant enough to warrant using the special case calculation method*

- Special Case – an initial forecast is made as if interrupting conditions are not present. The interruption effects are then introduced to calculate the special forecast

# Forecast Comparison



*Late Finish – 4 periods of down time (15-18)*

- The normal forecast has a larger increase for the down time and requires longer to converge to the final duration

A decorative graphic on the left side of the slide, featuring three colored circles (dark teal, light teal, and grey) and a vertical line.

# Special Case Summary

- The special case forecasts are more accurate for every set of computed values after the first period
- The column charts clearly indicate better forecasting and convergence for all data ranges
- When interruptions of *Stop Work* and *Down Time* are encountered the special forecasting method can be expected to produce more reliable results

# Longest Path

# Longest Path Forecasting

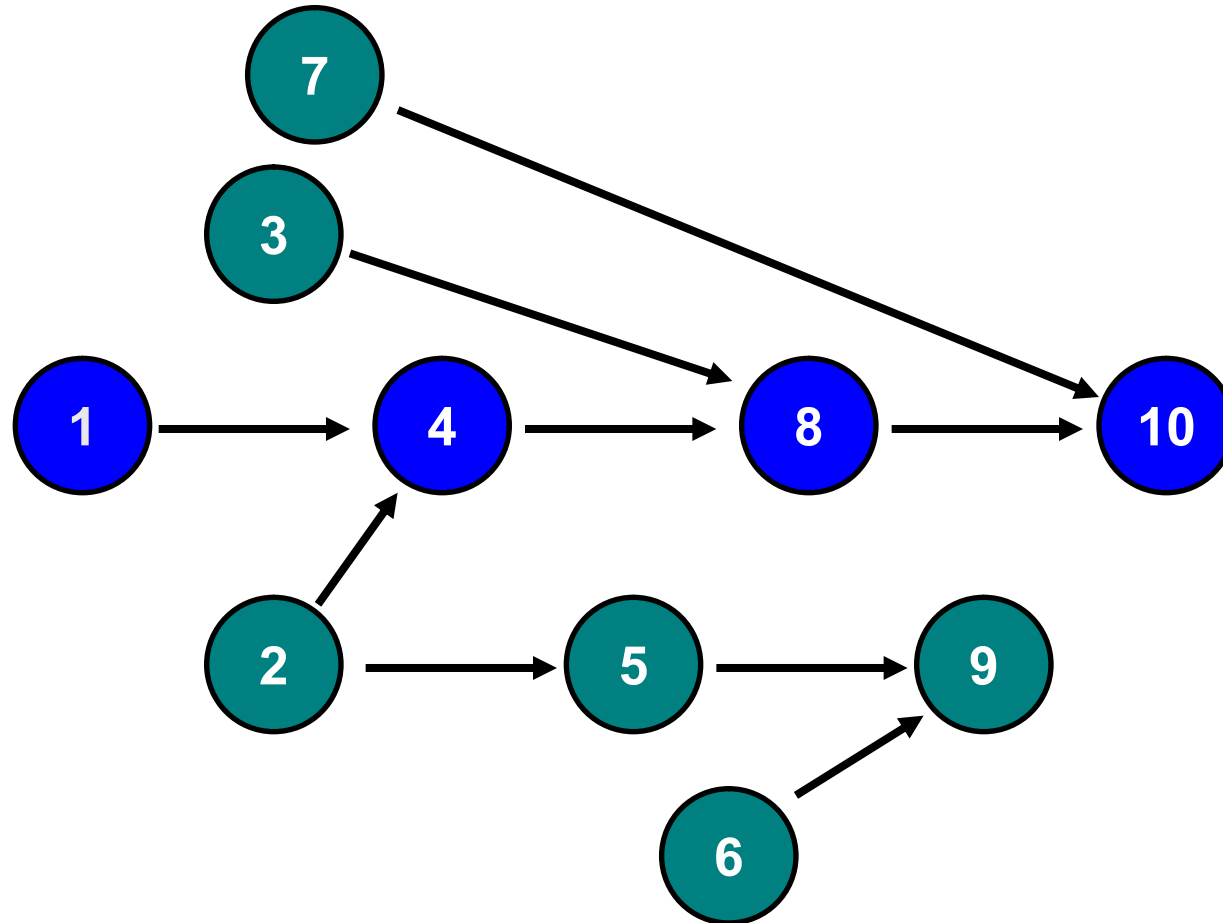
- The forecasting formula  $IEAC(t) = PD / SPI(t)$  has proven to be reasonably good
  - Kym Henderson (real data) – 2004
  - Vanhoucke & Vandevoorde (simulation) – 2007
  - Lipke (EVM conversion) - 2008
- Recent research indicates ES forecasting more reliable for serial schedules and less so for parallel (Vanhoucke 2009)
- Recommended solution – combining two techniques – ES & SRA (Vanhoucke 2012)



# Longest Path Theory

- Forecasts from serial schedules have been shown to be most reliable ...thus, the possible serial paths to completion of the network are identified for forecasting
- The longest forecast determined from the various paths at each performance period converges to the actual final duration with less variation than any other path
- If true, it follows that the set of longest forecasts resolves the parallel topology issue of ES forecasting applied to the total project

# Project Schedule Paths



A decorative graphic on the left side of the slide, featuring three colored circles (dark teal, light teal, and grey) and a vertical line.

# Performance Analysis

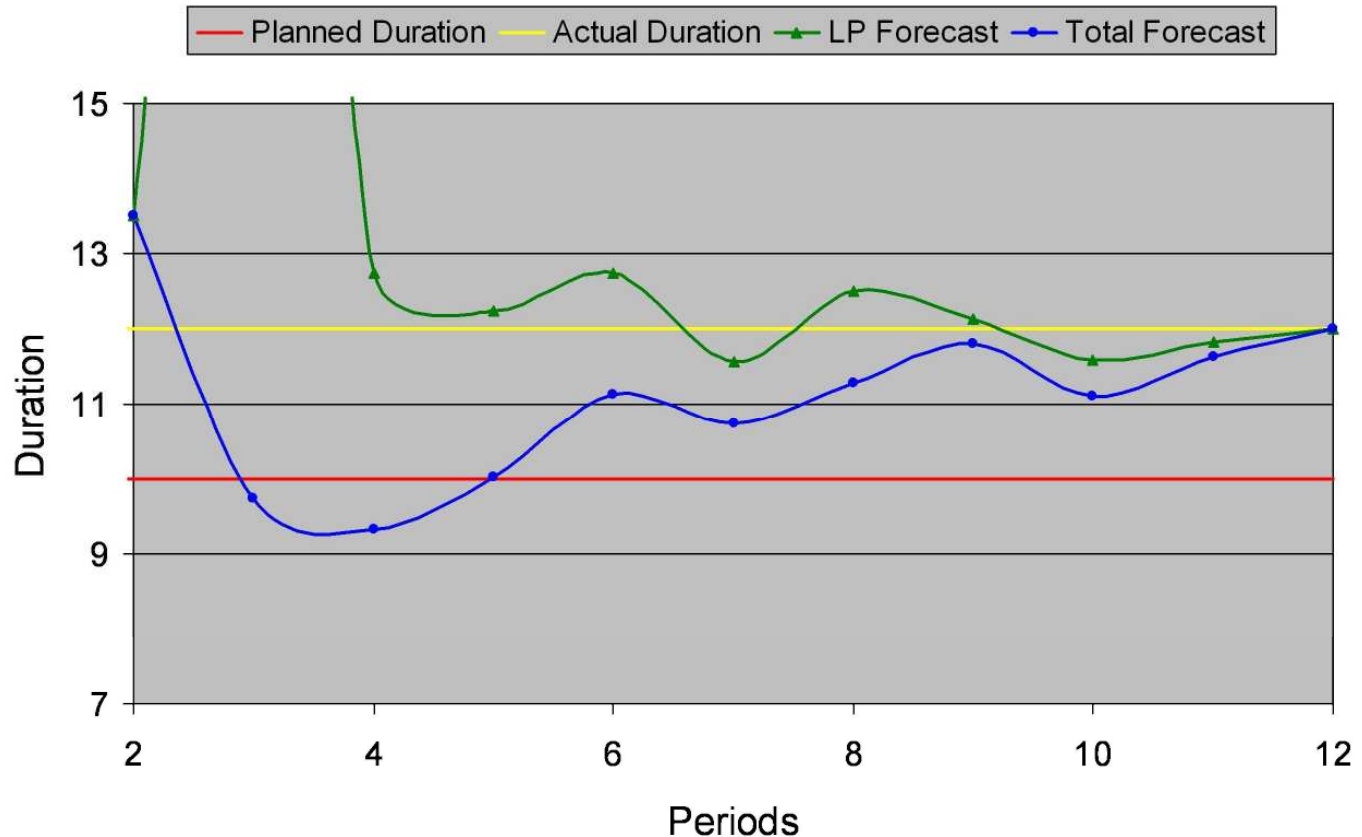
- Execution of the various tasks does not necessarily coincide with the plan ...voids are seen in the EV and PV data
- The project did not complete on the Critical Path
- Two paths completed two periods past the planned duration of 10 periods, 2-5-9 and 6-9

# LP Forecast Results

Performance Path	**** * Period **** *											
	1	2	3	4	5	6	7	8	9	10	11	12
1-4-8-10		13.50	9.33	7.82	9.00	11.00	9.96	9.75	11.00	10.00		
2-4-8-10			28.67	10.89	10.00	12.67	10.51	10.00	11.33	10.00		
2-5-9				8.00	8.38	8.83	10.00	11.75	11.75	11.45	11.75	12.00
3-8-10			12.00	9.62	10.00	12.67	10.51	10.00	11.33	10.00		
7-10				12.75	12.24	12.75	11.57	10.78	11.40	10.00		
6-9						9.17	10.00	12.50	12.14	11.58	11.82	12.00
Total Project		13.50	9.75	9.33	10.03	11.12	10.74	11.29	11.81	11.11	11.64	12.00

- The forecasts are shown in the table with the longest path identified by the lime color
- The longest path changes during execution
- The project finished late  $\Rightarrow \text{IEAC}(t)_{LP} \geq \text{IEAC}(t)$  at every period
- Both  $\text{IEAC}(t)_{LP}$  &  $\text{IEAC}(t)$  converge to the actual final duration, 12 periods

# LP Forecast Results



- Convergence and forecasting characteristics are readily seen from graph – LP forecast is more accurate and less variable

# LP Forecast Summary

- Schedule topology affects the “goodness” of ES forecasting – as the schedule becomes more parallel the forecasting accuracy decreases
- The idea of “longest path” (LP) was proposed and tested with notional data
  - The LP forecast provided better results in every instance
  - It is reasonable to assume IEAC(t) is the lower bound when the LP forecast is consistently greater
  - The LP forecast appears to be a significant improvement – more testing is needed before declaring the method resolves the ES forecasting problem for parallel topology schedules

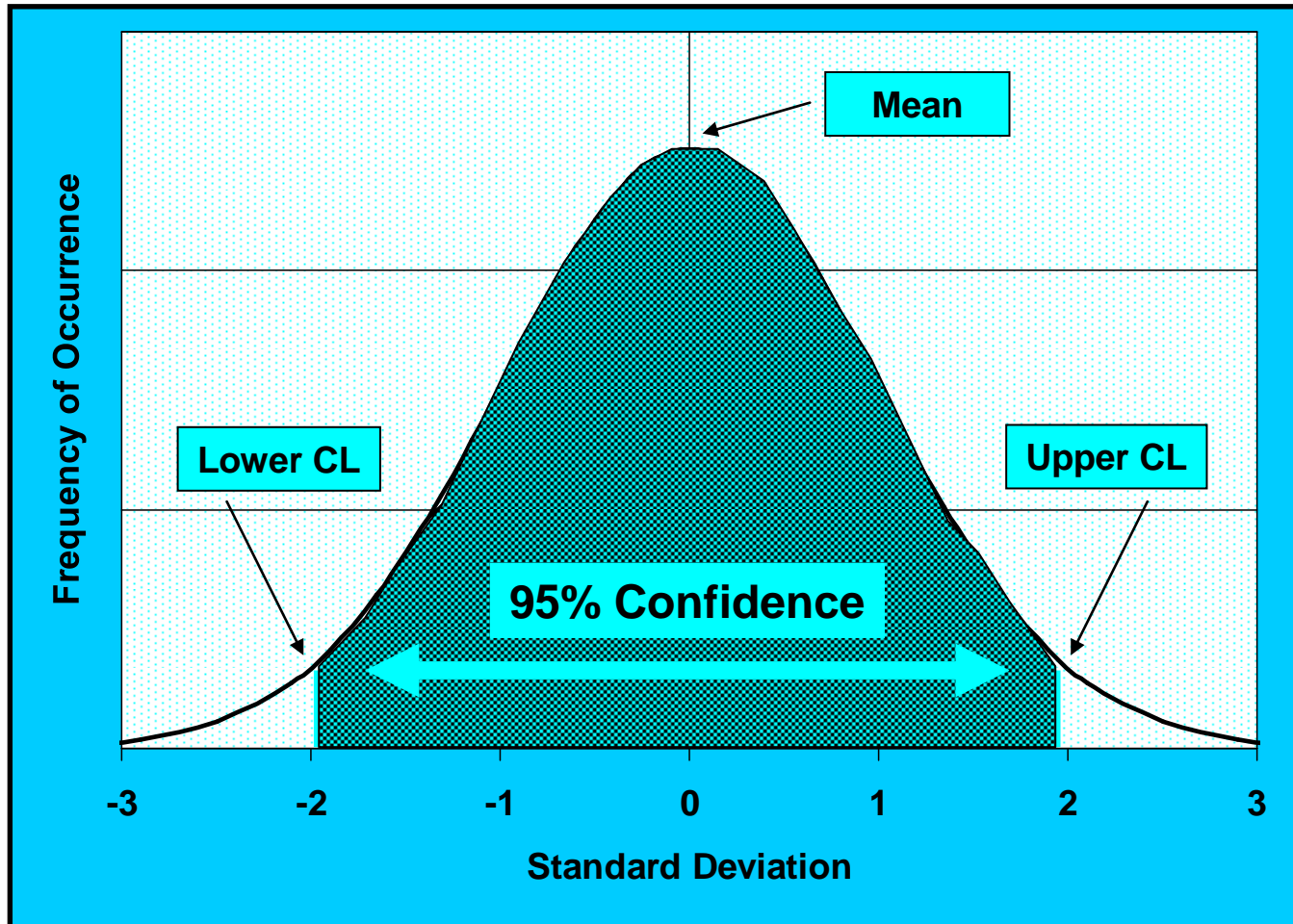
# Statistical Forecasting

# Statistical Forecasting

- An objective of project management is to have the capability to reliably predict cost and schedule outcomes
- The application of statistical methods to the cost and schedule indicators from EVM and ES is a well-founded means for providing the project management objective



# Confidence Limits

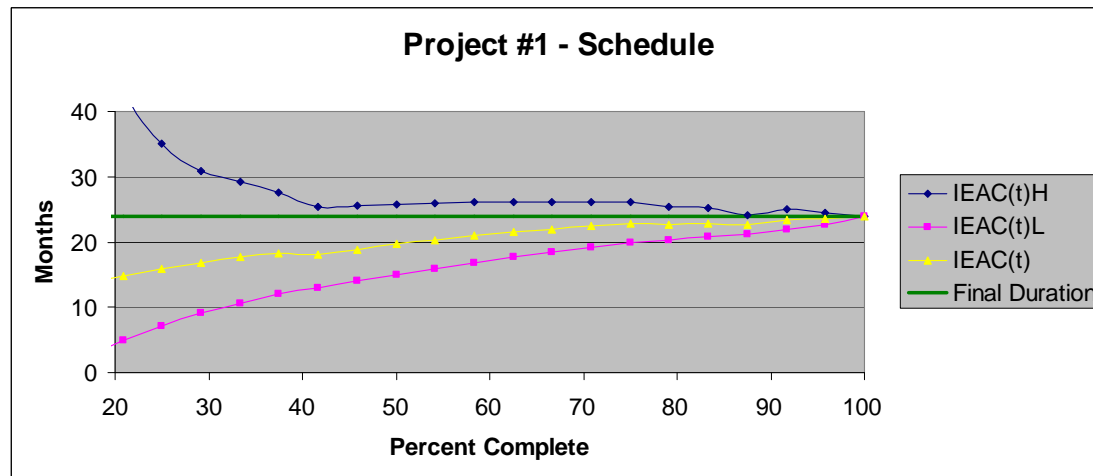
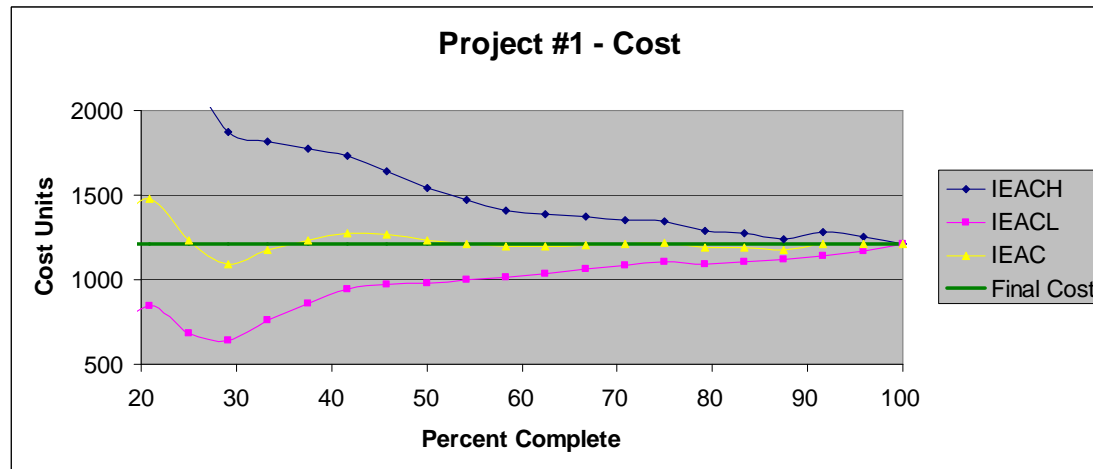


# Use of Confidence Limits

- Confidence Limits of the performance indexes, using the finite population adjustment, have been shown to produce reliable forecasts of bounds for cost and schedule outcomes
- $CL_{(\pm)} = \ln \text{index}(\text{cum}) \pm Z * (\sigma/\sqrt{n}) * AF$ 
  - $AF_C = \sqrt{((BAC - EV) / (BAC - (EV/n)))}$
  - $AF_S = \sqrt{((PD - ES) / (PD - (ES/n)))}$
- Forecast at Completion
  - $IEAC_{(\text{low or high})} = BAC / e^{(CL_{(\pm)})}$
  - $IEAC(t)_{(\text{low or high})} = PD / e^{(CL(t)_{(\pm)})}$

# Example Forecast

(90% Confidence – real data)



# Example Observations

- Difference between upper & lower CLs becoming smaller as percent complete increases
- CPI is very stable between 50 and 100%
- SPI(t) consistently worsens
  - IEAC(t)H beginning at 30% complete proved to be very close to the eventual final duration
- As a rule, of the three plots, the graph that is most horizontal is the best forecast

*The method is generally applicable and encouraged  
– independent of size or type of project*

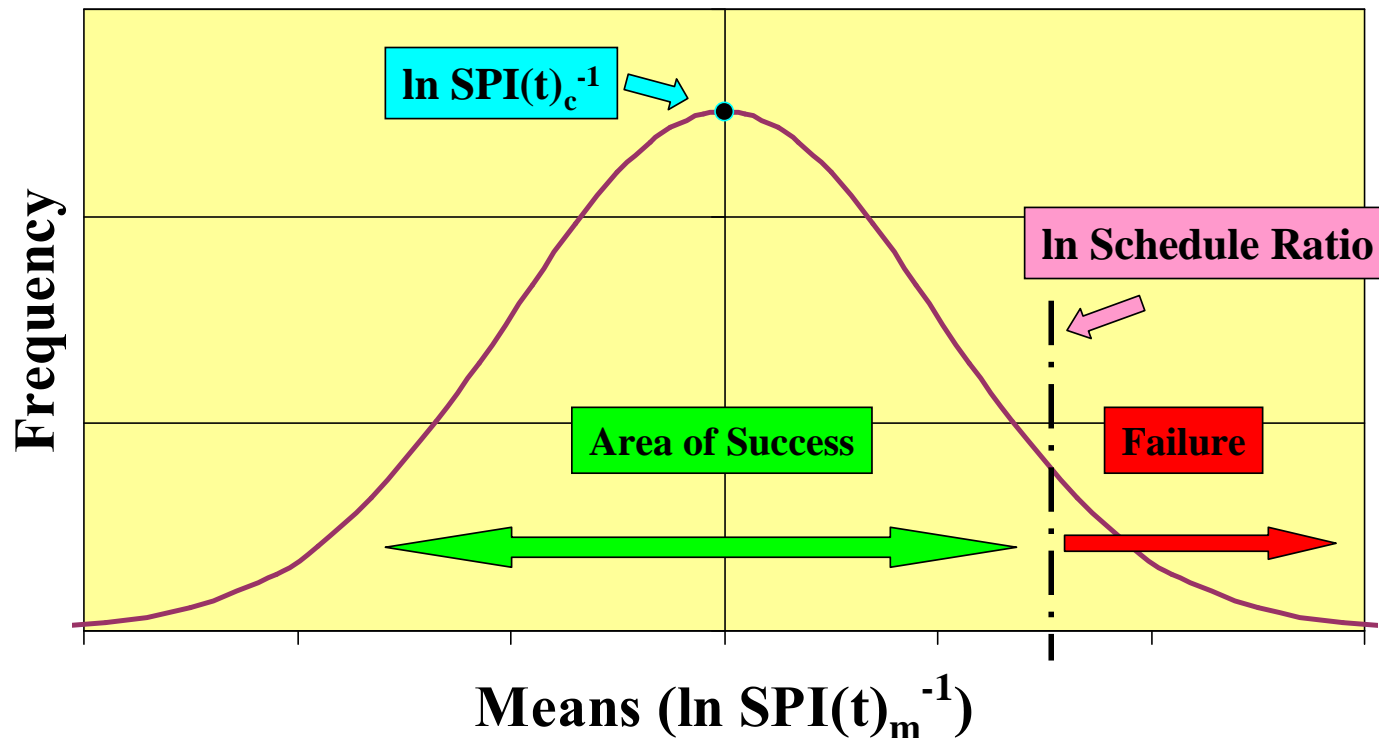
# Statistical Planning

# Statistical Planning

- Risk mitigation  $\Rightarrow$  *Cost/Schedule Reserve*
- Data needed
  - Performance variation from similar historical project [Standard Deviation =  $\sigma_H$ ] -or- qualitative estimate of Risk
  - Planned Duration of new project [provides the number of performance observations ( $n$ )]
  - Variation of Means  $(\ln xPI(t)_m^{-1}) = \sigma_H / \sqrt{n} = \sigma_m$
  - Probability of Success Desired (PS)

# Probability of Success

- Below is a graphic example using schedule measures



# Planning Data & Calculation

## ○ Calculation

PS  $\Rightarrow$  Z (use Normal Distribution Tables or Excel)

$$Z = (\ln xR - \ln xPI(t)_c^{-1}) / \sigma_m$$

where  $xPI(t)_c^{-1} = 1.0$  for plan

$$xR = \text{antilog} (Z * \sigma_m)$$

$$\text{Cost: } CR = TAB/BAC \Rightarrow TAB = CR * BAC$$

$$\text{Management Reserve} = (CR - 1) * BAC$$

$$\text{Schedule: } SR = TAD/PD \Rightarrow TAD = SR * PD$$

$$\text{Schedule Reserve} = (SR - 1) * PD$$



# Example Calculation

- Data:  $\sigma_H = 0.4$ , BAC = \$1M,  $n = 36$ , PS = 90%
- Calculation:

$$\sigma_m = 0.4 / \sqrt{36} = 0.0667$$

$$\text{PS} = 90\% \Rightarrow Z = 1.2816$$

$$\begin{aligned} \text{Cost Ratio} &= \text{antilog}(1.2816 * 0.0667) \\ &= 1.0892 \end{aligned}$$

$$\begin{aligned} \text{Management Reserve} &= (1.0892 - 1) * \$1M \\ &= \underline{\underline{\$89,200}} \end{aligned}$$

- Does this amount of reserve cause the bid to be non-competitive? ...Can we accept more risk with a lower probability of success?

A decorative graphic on the left side of the slide, featuring three colored circles (dark teal, light teal, and grey) and a vertical line.

# Planning Comments

- Simple statistical methods link probability of success to reserves ...to bid competitiveness ...and management decisions
- Makes use of historical data ...and creates need for repository containing valid data
- Creates an awareness during planning of the connection between risk and competitiveness
- Separates risk resource planning from task estimates for both cost and duration

# Wrap-Up

# Earned Schedule Summary

- Managing schedule may be more difficult than cost and has more repercussions
- ES is derived from the PMB and EV accrued
- ES makes possible - reliable schedule performance indicators, forecasting, prediction
- ES facilitates - identifying process impediments, assessing actions taken & minimizing rework
- ES amplifies ability to control project using EVM data
- Application aids are available and coming

A decorative graphic on the left side of the slide, featuring three colored circles (dark teal, light teal, and grey) and a vertical line.

# Supplemental Remarks

- Data for analysis comes from EVM ...no new data is required
- Provides top down approach to assessing schedule performance
- Equally usable for re-planned projects, and small projects having stop work and down-time conditions

# Supplemental Remarks

- ES methodology is growing
  - ES website is receiving  $\cong$  45K hits per month
  - Project management and EVM books now include ES
  - Included in university coursework & research
  - Evidence of use is global
  - Usage is occurring in several industries
  - Included in PMI® EVM Practice Standard (Oct 2011)

# Supplemental Remarks

- ES has had its share of detractors ...and proponents, as well
- British philosopher, John Stuart Mill, once made this observation that new ideas pass through three phases of denial:

First – *They are wrong*

Second – *They are against religion*

Third – *They are old news, trivial, common sense, and we all would have thought of them if we had had the time, money, and interest*

A decorative graphic on the left side of the slide, featuring three colored circles (dark teal, light teal, and grey) and a vertical line.

# Application Help

- Explore the Earned Schedule website
  - [www.earnedschedule.com](http://www.earnedschedule.com)
  - Papers, Presentations, Calculators, Terminology
- Read two articles ...to begin
  - “Schedule is Different”
  - “Further Developments in Earned Schedule”
- Scan the Calculators ...experiment with them
  - ES Calculator (v1a & vs1b)
  - P-Factor Calculator
  - Statistical Prediction Calculator
  - SA Index & Rework Calculator



# Available Resources

- Earned Schedule Website  
<http://www.earnedschedule.com/>
- PMI® *Practice Standard for Earned Value Management*, 2<sup>nd</sup> Edition
- *Earned Schedule* book (English, Japanese, Spanish)
  - Print
  - ePub (Nook & iPad)
  - Kindle
  - PDF



# Contact Information

Walt Lipke		Kym Henderson
<a href="mailto:waltlipke@cox.net">waltlipke@cox.net</a>	Email	<a href="mailto:kym.henderson@gmail.com">kym.henderson@gmail.com</a>
+1 405 364 1594	Phone	+61 414 428 537